

# Answers

## Animal Antics Wordsearch

b e a r b w o z v x c c  
 s c o r p i o n l t r t  
 f q d t b n i r z k a a  
 p x d e a g l e c b b o  
 g m o e q x t l o c m g  
 g d l i o n j a l n y d  
 i j p n f i s h d i o o  
 r b h f w o z w n v t g  
 a l i z a r d o e n p i  
 f c n m l q j y e r a h  
 f d r a g o n x s w a n  
 e v i r v n r o c i n u

## Heavenly Bodies Wordsearch

a r c t u r u s o x y z  
 r v a t l m p i i b u p  
 b l s r j i s r n e f s  
 t a t p c r t i a n v t  
 n v o a v m n u g e q s  
 z n r x n e j s h d u i  
 f p r i r e g u l u s r  
 l m i l k y w a y l r a  
 i l q n r v s x u b u l  
 a r i a t l a n j q z o  
 z j o o t y x u l l o p  
 a l l e p a c i c d l o

## Constellations Wordsearch

s a g i t t a r i u s f l b  
 g l t b o o t e s f e d c u  
 b z q f d l t g e n z a d r  
 l f k s u n g y c q p b n p  
 e l o v g e r i a r s v l d  
 o g a d e l p h i n u s n y  
 x o y q d q a c f n b o i l  
 n c a s s i o p e i a r s r  
 y z i p o r m t x o z e p a  
 a e l j n l f i n b n c k g  
 d s i u t c o r b m g o i i  
 a t s i p p u p o i v n t r  
 o d q c u r s a m i n o r u  
 b n o i r o d z j o m m i a

## Name that Constellation

1. Plough / Big Dipper
2. Orion
3. Gemini
4. Ursa Major
5. Cassiopeia
6. Great Dog

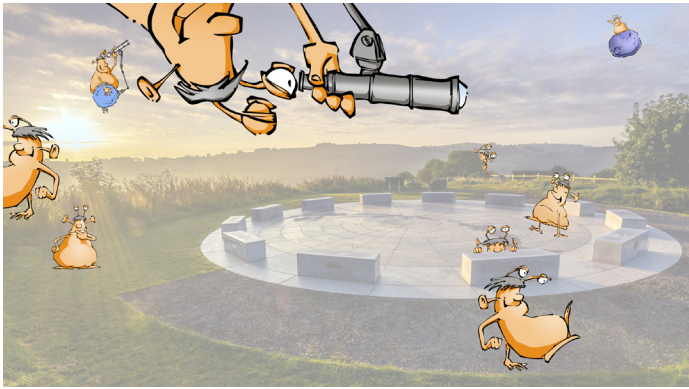
## StarMaths - Counting

- |                |                   |
|----------------|-------------------|
| 1 Libra: 6     | 6 Ursa Major: 21  |
| 2 Aries: 9     | 7 Cassiopeia: 5   |
| 3 Orion: 23    | 8 Microscopium: 4 |
| 4 Hercules: 20 | 9 Canis Major: 16 |
| 5 Pisces: 5    | 10 Perseus: 20    |

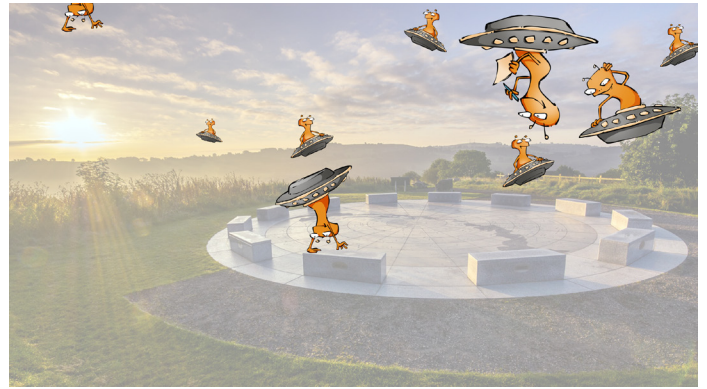
## StarMaths - Number Puzzles

- |                  |                          |
|------------------|--------------------------|
| 1: $17 + 5 = 22$ | 6: $24 - 6 = 18$         |
| 2: $11 + 3 = 14$ | 7: $21 \times 4 = 84$    |
| 3: $9 + 15 = 24$ | 8: $6 \times 4 = 24$     |
| 4: $15 - 5 = 10$ | 9: $22 \div 2 = 11$      |
| 5: $7 - 4 = 3$   | 10: $(7 + 7) \div 7 = 2$ |

# Multiverse Chaos



**Bloginuis - 9**



**Sauceron - 9**



**Trianglion - 9**



**Wheelius - 6**